

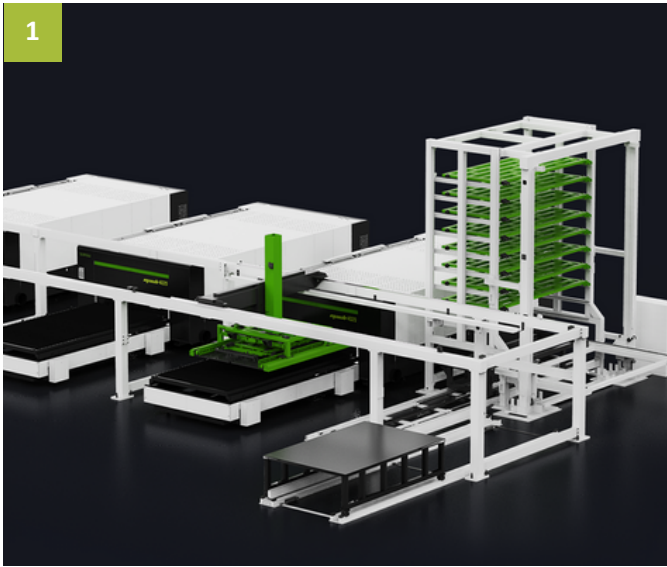
HyStore SERIES

LASER CUTTING SYSTEM AND INTELLIGENT STORAGE SYSTEM

■ Customer benefits

- Songu laser cutting machine is equipped with Hystore series automatic loading and unloading and storage systems which are controlled through the software to realize an unattended automated intelligent laser cutting production;
- With independent research and development integrated flexible production system, it can meet the management needs of modern manufacturing enterprises for processing automation, production flexibility and manufacturing intelligence;
- Multi-level storage unit, the number of storage floors can be customized according to user needs, greatly increasing the utilization rate of the site;
- Adopting modular design, it can realize the linkage loading and unloading of single machine and multiple machines;
- EtherCAT bus communication, seamlessly docking with the intelligent factory MES system, to create a digital intelligence production workshop.

■ Characteristics



Laser cutting with intelligent load, upload and storage system



Customizable multi-layer storage



BECKHOFF Motion control systems



No manual lifting and guarding required